

11th Annual
**Winter
Lace
Conference**

**February 17-19,
2017**

**Plus
an “add on” additional day
with your teacher**

**on
February 20
And**

**EXTRA pre-conference
workshops**

**on
February 17
with**

**Louise Colgan, Susie
Johnson, and Elizabeth
Peterson**

For more information, contact Betty Ward at 1-714-522-8118 or betnor@aol.com OR Belinda Belisle at 1-562-596-7882 or belis92645@aol.com

11th Annual Winter Lace Conference

We are off and running as we start our second decade of the Winter Lace Conference!

We have heard your requests to “bring back the favorites.” Of course, there were so many favorites, it was difficult to select only a few. But, we think you will agree we have another great selection of classes.

Back by popular demand are Louise Colgan, Susie Johnson, Elizabeth Peterson, Kathy Kauffmann, and Mary Shields. New to our slate of teachers—but definitely not new to the Winter Lace Conference—is Jean Doig, who brings her vast knowledge of the many types of lace knitting throughout the world.

Kicking off the weekend are the highly successful mini classes. These classes are designed to give you extra one-on-one time with the teacher. Registration is limited to 8—so get yours in early! This year, joining the list of mini classes are two specialized half-day classes: one just on leaves and the other on tallies. Both classes are taught by Elizabeth Peterson! If you have seen her leaves/tallies, you know you will want to sign up!

Back again is our vendor hall packed with lace supplies, an educational and fun-filled banquet presentation, and our traditional Sunday brunch—and all the fun you can pack in one weekend.

We look forward to seeing you in February 2017!

Belinda and Betty

The Weekend at-a-Glance

Friday, February 17, 2017

EXTRA CLASSES

Milanese Workshop with Louise Colgan

OR

Bucks, Withof, & More Workshop with
Susie Johnson

OR

Leaves and Tallies Workshops with
Elizabeth Peterson

R&R—Registration and Reception
Vendor Hall Opens

Saturday, February 18, 2017

- Classes
- Vendor Hall
- Luncheon

Sunday, February 19, 2017

- Brunch
- Classes
- Vendor Hall
- Banquet and Special Presentation

Monday, February 20, 2017

EXTRA: Add-on another day with your teacher!

Special Presentation



The Odyssey of the Poppies

By Susie Johnson

What began as idle conversation grew into an international exhibition of 48 different lace interpretations of the same California poppy drawing. The banquet lecture will tell the incredible story of how this simple idea evolved and took on a life of its own, eventually involving 39 lacemakers from 12 countries. It was an amazing 7-year journey!! You will not want to miss Susie's wonderful presentation.

Since she started making lace in 1981, Susie has pursued the serious study of many different types of laces, with different teachers from a number of different countries. She has also been teaching lace for over 20 years. Her work has been exhibited internationally, and she has been the co-coordinator of the International Poppy Project.

Special Pre-Conference Workshops

Special Pre-Conference Workshops— Friday, February 12, 2017

Do you want more time at your lace? If your answer is “YES,” you will want to sign up for one of the Friday workshops. We will limit the size of the group so each student will have greater opportunity for more personal attention and in-depth study. Get your registration in early to reserve your seat!

ADVANCED and INTERMEDIATE MILANESE

With Louise Colgan (full day)

Louise Colgan's Friday class is offered for students wishing to work on larger pieces already in progress or to start an advanced piece that requires additional time beyond the standard conference days.

BUCKS, WITHOF, and More

With Susie Johnson (full day)

Susie Johnson's Friday class will provide the student with more opportunity for in-depth discussions than is possible in a regular class day. This class is not for new students but is suited to all continuing people who would like to have a day where they would have more teacher time and as many questions and answers that can be crammed into one day, along with technical discussions and lots of theory in addition to tweaking their work. This class is also ideal for those wanting to finish (or start) a project.

PERFECTING LEAVES and TALLIES

With Elizabeth Peterson (two half-day workshops)

These two half-day workshops are designed to help you take the mystery out of leaves and tallies. Come learn to weave and tension so your leaves are smooth and nicely shaped in the morning session and then stay for the afternoon session, where you will learn hints and tricks to keep your tallies woven square and kept that way. You will also learn how to make raised /rolled tallies on the top or bottom. It's your choice—leaves or tallies OR take both sessions--you'll love leaves and tallies when you leave.

Confirmation of courses and supply list will be emailed by January 15.

The Classes



Bucks Point, Withof, and More—All Levels

Teacher: Susie Johnson (U.S.)

Bucks Point is a beautiful, elegant English bobbin lace with net ground and prominent gimp to draw the eye to the design motifs. Beginning students will learn the foundations of Bucks, including footside, point ground, catchpin, picots, and honeycomb. Continuing students will work on more difficult patterns to learn the curved Bucks headside and more complex gimp movement and typical pattern elements. The flow and rhythm of Bucks patterns make it a pleasant lace to work! Anyone who wishes to either begin or continue Withof is welcome to join this class.

For those whose interests lie elsewhere, other possibilities include Torchon bookmarks or Christmas ornaments, Ulrike's gold stars, 's Gravenmoerse, and Brussels Duchesse. In addition, upon request and with approval, students are welcome to pursue other laces, which includes help with UFOs and long-awaited projects requiring help to start.

Since she started making lace in 1981, **Susie Johnson** pursued the serious study many different types of laces with different teachers from a number of different countries. She is best known for her work in Withof but, almost as soon as she learned to make lace, Bucks Point became her favorite lace and she spent many years studying it with a variety of teachers. She has also been teaching a variety of other laces for over 20 years at events such as I.O.L.I. conventions, the Winter Lace Conference, the Finger Lakes Lace Days in Ithaca, and Lace at Sweet Briar, as well as twice-weekly classes at home. Her work has been exhibited internationally and she has been the co-coordinator of the International Poppy Project. She is also on the I.O.L.I. Proficiency Journal Committee.

Milanese Lace—All Levels

Teacher: Louise Colgan (U.S.)

Milanese is a free-flowing form of tape lace characterized by special decorative stitches that become integral features of each design. The creative nature of this type of lace makes it suitable for both traditional and contemporary interpretation. This course will cover all levels of Milanese techniques. A wide variety of patterns will be provided to suit both new and continuing Milanese students. Lacemakers will be given the option of using colored threads to make their own unique pieces from the selected patterns. As with other similar free-style laces, individual interpretation of each pattern is part of the learning process. A solid foundation in basic Bobbin Lace skills is required. Ability to read diagrams is also recommended.



NOTE: NEW AND CONTINUING MILANESE STUDENTS ARE WELCOME! UFO'S FROM A PREVIOUS WORKSHOP WITH LOUISE MAY ALSO BE INCLUDED.

Louise Colgan is a lacemaker, designer, and teacher with experience in a broad range of Bobbin Lace techniques. She began making lace in 1985 and has been teaching for over 25 years. She has served on the Board of the International Organization of Lace, Inc. as President, 1st & 2nd Vice-Presidents, Southwest Regional Director, and Grants Committee Chair. She is currently Chair of the Proficiency Program Committee. Louise has taught Bobbin Lace classes at many I.O.L.I. Conventions, plus workshops for U.S. members of O.I.D.F.A. and a wide variety of regional guilds. In 2012, she was invited to teach workshops at the Australian Lace Guild's National Conference in Sydney and for the Tasmanian State Branch. In her capacity as a lacemaker and designer, Louise has exhibited her work both locally and internationally. She is a participant in the International Poppy Project, an ongoing traveling exhibition that began in 2009. Her designs have been presented in the *LACE EXPRESS* magazine and the I.O.L.I. *BULLETIN*. Additionally, she has published three books of original patterns and has made an instructional video on Milanese Lace through Hensel Productions.

The Classes (continued)

A Taste of Knitted Lace—Beginning and Continuing

Teacher: Jean Doig (U.S.)

In this class you will be learning about four knitted laces: Contemporary, Estonian, Shetland, and Herbert Neibling. Each one has a unique style/look and its own challenges. We will learn about these as we knit a piece in each style. Then, on Monday, we will start ANY knitted lace pattern you wish. By the end of the day, you should be able to complete the piece without further assistance from me.



Jean Doig says I was born and raised in Los Angeles, California. My mother started my love of fiber arts with knitting and crochet at 5 years. She had me do my needlework over and over until it was correct. From there I learned Embroidery and Needlepoint, then ridged heddle and card weaving. By 15, I was also tatting, spinning, and dyeing. At 21, I learned Bobbin Lace, and when I was expecting my first child I learned Netted Lace. There are so many variations to fiber arts that I am always learning something new.



Bruges Lace—Beginning and Continuing

Teacher: Elizabeth Peterson (U.S.)

This class will teach the basic skills for Bruges lace, including the basic tape, plaits and picots, several types of flowers, leaves, and the scroll. Students will learn the traditional Belgian techniques, as well as other methods to make the lace easier to tension. Continuing students will learn how to navigate the fillings and some additional Bruges techniques. This is a fun and traditional lace to make – come learn some new tricks to add to your lacemaking skills.

Elizabeth Peterson started making lace in 1985 and teaching in 1996. She has attended several I.O.L.I. conventions and area workshops, taking classes from many teachers, both nationally and internationally. She believes lacemaking is fun and challenging and a great way to spend your time. Elizabeth enjoys a lot of laces and teaches several kinds weekly. She has won many awards for her lace at the local, state, and international levels, including technical proficiency and Best of Show.

Our Raffle
Needs You!

If you have items you would like to donate to the raffle, please let us know. Contact Betty Ward at 714-522-8118 or betnor@aol.com OR Belinda Belisle at 562-596-7882 or belis92645@aol.com.

Cancellation Policy: If you need to cancel, please tell us immediately so someone else may have your place. Requests for refunds must be made in writing to Betty Ward and must be postmarked by January 15, 2017. Refunds will be subject to a \$25 cancellation fee. We will not be able to honor requests for refunds postmarked after January 15.

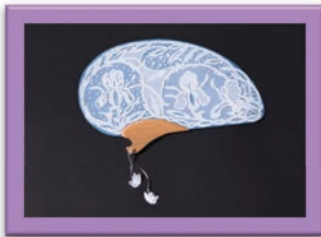
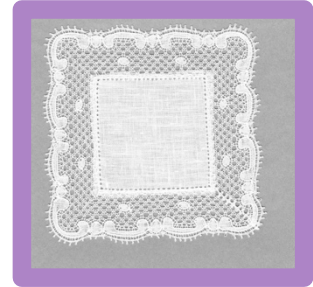
The Classes (continued)

Binche and Flanders Lace—Beginning and Continuing

Teacher: Kathy Kauffmann (U.S.)

Experience for the first time or continue your studies of Belgian laces. Flanders is a Belgian lace with a unique 5-hole ground. It provides an excellent base for any other Belgian lace, especially Binche. Binche is a unique lace that uses elements of Flanders, Paris, and Valenciennes. It is known for the beautiful snowflake ground and flowing elements.

Kathy Kauffmann has been making lace for more than 35 years, with more than 30 years of teaching experience. She began her studies in France and has continued studying with many teachers both in the US and Europe. She has been concentrating on Flanders and Binche for the past several years. Kathy is a former president of O.I.D.F.A.



Carrickmacross—All Levels

Teacher: Mary Shields (Ireland)

Carrickmacross Lace is the best-known Irish lace and is always in vogue for formal and special occasion fashion. European Royal weddings and christenings frequently feature Carrickmacross Lace. The lace is made with a needle and thread and two layers of fabric, which form the lace ground and appliqué. A special scissors is used to remove excess fabric to reveal the design. Fancy embroidery or filling stitches are used to embellish the design

and areas of guipure work are included to create contrast. Basic needlework skills are required. A variety of projects will be available to include every level. Should you have any special requests please contact the teacher in advance. **There is a \$5 materials fee for this class.**

Mary Shields is a lacemaker, designer, teacher, and published author of articles on lacemaking, including two books on Carrickmacross Lace. While proficient in many lace techniques, Carrickmacross Lace is her speciality. Her work has been exhibited internationally and awarded many prizes, including the “Award of Excellence” sponsored by the Royal Dublin Society. Over a period of 35 years, she has given lace classes and workshops in European countries, the USA, Canada, Australia, and Japan, for lace groups and organisations such as The Guild of Irish Lacemakers, I.O.L.I., The Lace Guild,

Hotel Reservations

The conference is being held at the Crowne Plaza (3131 South Bristol, Costa Mesa, CA 92626). The Crowne Plaza is at the center of Orange County, just 1-1/2 miles from John Wayne Airport and close to the world class South Coast Plaza and Orange County Performing Arts Center complex.

1. **Make your hotel reservations directly with the Crowne Plaza at 866-437-8957.**
2. **To get the special rate, you will need to make your reservation prior to January 25, 2017.**

Make sure you ask for the “Winter Lace 2017” room block!

If you wish to book rooms before or after February 11 – 15, please contact Jillian Clary, Sales Manager, at jclary@cpcoastamesa.com or (714) 913-9055.

Winter Lace Conference Registration

*Saturday & Sunday Class Choices (Monday, if attending additional day)
Workshops run concurrently. Please list your choices in order of preference.*

First Choice: _____

Second Choice: _____

Monday Workshop: _____

*Photocopies are accepted.
Please one person per form.*

All payments in U.S. dollars.

Registrations must be postmarked ON or AFTER October 1, 2016.

For questions about registration, contact: Betty Ward at 1-714-522-8118 or betnor@aol.com.

Event	Indicate Choice	Price per Person	Total
Conference Registration (for those staying at the conference hotel) Registration includes Friday reception, access to the vendor hall, lunch on Saturday, and buffet breakfast on Sunday—NOTE: ALL ATTENDEES MUST REGISTER FOR THE CONFERENCE. CONFERENCE REGISTRATION FEE DOES NOT INCLUDE CLASS REGISTRATION—REGISTER FOR CLASSES BELOW.	↑	\$80.00	↑
OR	↓		↓
Commuter Conference Registration Commuter registration includes all items mentioned above.—NOTE: ALL ATTENDEES MUST REGISTER FOR THE CONFERENCE. CONFERENCE REGISTRATION FEE DOES NOT INCLUDE CLASS REGISTRATION—REGISTER FOR CLASSES BELOW.	↓	\$170.00	↓
Class Registration (Class registration covers classes for Saturday and Sunday.) Please indicate your class choice on the lines at the top of this page.		\$200.00	
Sunday Banquet & Presentation (Please indicate number of each meal—including guests.) <div style="text-align: center;"> <input type="checkbox"/> Chicken <input type="checkbox"/> Fish <input type="checkbox"/> Vegetarian </div> Dietary Restrictions: _____		\$55.00	
Special Workshop Friday, February 17 —includes lunch for full-day classes & those taking <u>both</u> the Leaves and Tallies workshops. <input type="checkbox"/> Milanese (full day: \$90) <i>OR</i> <input type="checkbox"/> Withof/Potpourri (full day: \$90) <i>OR</i> <input type="checkbox"/> Leaves (9 a.m. to noon: \$45) <input type="checkbox"/> Tallies (1:00 p.m. to 4:00 p.m.: \$45)		\$100 <i>(full-day)</i> \$50 <i>(ea half-day)</i>	
Monday Workshop —an extra class with your weekend teacher . Note: Must attend weekend.		\$80.00	
Light Rental —If you are traveling to the Conference and don't want to bring a light, we will make arrangements for light rental. Fee covers use of one light for all days registered.		\$15.00	
Special Winter Lace Conference Bobbins (Please indicate the number of bobbins for each type.) <input type="checkbox"/> Continental <input type="checkbox"/> Midlands	Total # Bobbins:	\$22.00	
		Total	

Please PRINT or type clearly. Your nametag and info in the conference handout will be made from this form.

Name: _____

Street Address: _____

City: _____ State: _____ Zip: _____

Phone No.: _____ Email: _____

- Make checks payable to:
Winter Lace Conference
 - Mail completed registration form and check to:
Betty Ward
7895 San Marino Drive
Buena Park, CA 90620-2394
- Make a copy of this form for your records!**

Cancellation Policy: If you need to cancel, please tell us immediately so someone else may have your place. Requests for refunds must be made in writing to Betty Ward and must be postmarked by January 15, 2017. Refunds will be subject to a \$25 cancellation fee. We will not be able to honor requests for refunds postmarked after January 15.



Winter Lace
Conference
2017

- ❖ Sunday brunch included in your registration
- ❖ Vending hall open Friday evening—as well as Saturday and Sunday
- ❖ Special Winter Lace Conference bobbins
- ❖ Limited-enrollment workshops on Friday!

Winter Lace Conference
c/o Betty Ward
7895 San Marino Drive
Buena Park, CA 90620-2394



Registration Date is
October 1, 2016!